



Martin Yeoman

Over Three Decades

Yeoman

Over Three Decades



Martin Yeoman

Over Three Decades

Jenna Burlingham FINE ART

2A George Street, Kingclere
Hampshire RG20 5NQ
www.jennaburlingham.com

Exhibiting at
Sibyl Colefax & John Fowler
89-91 Pimlico Road, London SW1W 8PH





CLARENCE HOUSE

I am delighted to introduce Martin Yeoman's latest exhibition, 'Over Three Decades'. The collection includes oil paintings of landscapes, seascapes and still life, and I am especially pleased that it includes the two paintings 'Suez basin from HMY Britannia' and 'Drying fishing nets, Ras Al Hadd', both of which Martin completed whilst accompanying me on an official tour of the Gulf States aboard the Royal Yacht in 1986.

I was first introduced to Martin by the late Sir Brinsley Ford in 1985 and was immediately struck by the superb draughtsmanship that underpins his work. I purchased a small oil painting of St. Davids, Pembrokeshire, at that first meeting as a gift for the then Prime Minister of Japan. Over the years, I have acquired many more of Martin's works for my personal collection. His unmistakeable talent is to be able to use drawing not only in its own right, but also as a tool, resulting in a broad range of work that is both sensitive and engaging.

As well as inviting Martin to accompany me to the Gulf States, he subsequently joined me as the tour artist on two further official tours to India and Hong Kong. Having the presence of an accomplished artist such as Martin adds a unique dynamic to these official trips. Being able to have the opportunity to paint together, as when we were waiting to pass through the Suez Canal in HMY Britannia, not only resulted in achieving a unique perspective, but also allowed me to benefit from the occasional technical hint.

I am sure that all who view his work will, like me, find fresh perspectives and renewed inspiration from his distinctive vision.



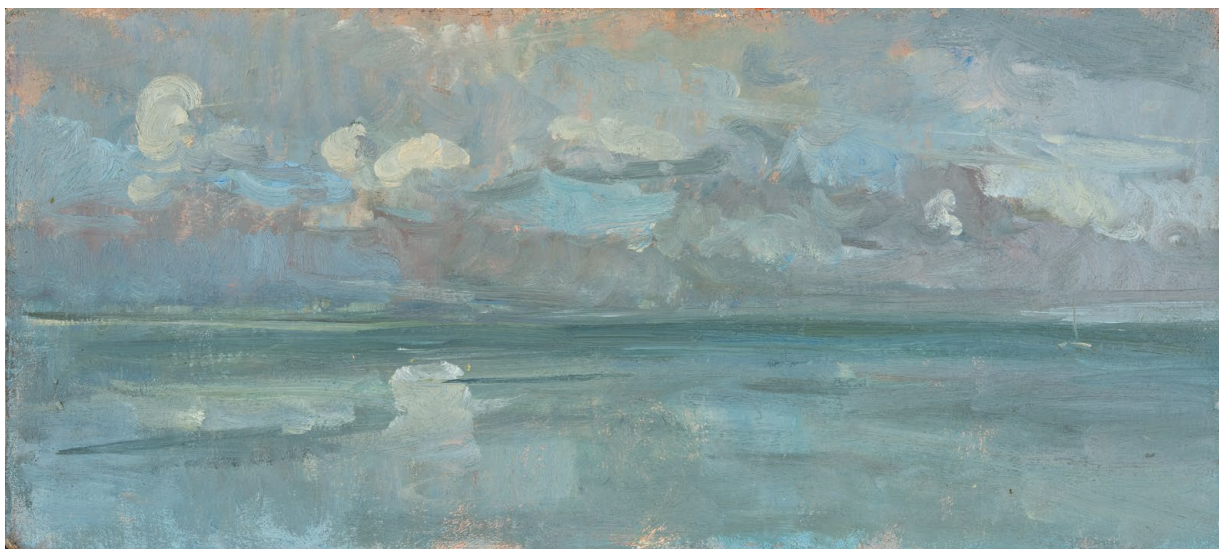
2. **Suez Basin from HMY Britannia** | oil on panel | 13 × 21.5 cm | 5⅛ × 8½ in



3. Drying Fishing Nets, Ras Al Hadd | oil on panel | 15 × 31.7 cm | 5⅞ × 12½ in



4. Old Harry Rocks | oil on panel | 25 × 35.5 cm | 9 $\frac{7}{8}$ × 14 in



5. Reflected Skyscape, Studland | oil on panel | 22.5 × 50.2 cm | 8⁷/₈ × 19³/₄ in



6. The Golan Heights from the Sea of Galilea | oil on panel | 15.2×33 cm | 6×13 in

7. The Dome on the Rock, Jerusalem | oil on canvas | 40.6×50.8 cm | 16×20 in





8. **Two Horses, Wiltshire** | oil on panel | 15.4 × 20.4 cm | 6¹/₈ × 8¹/₈ in



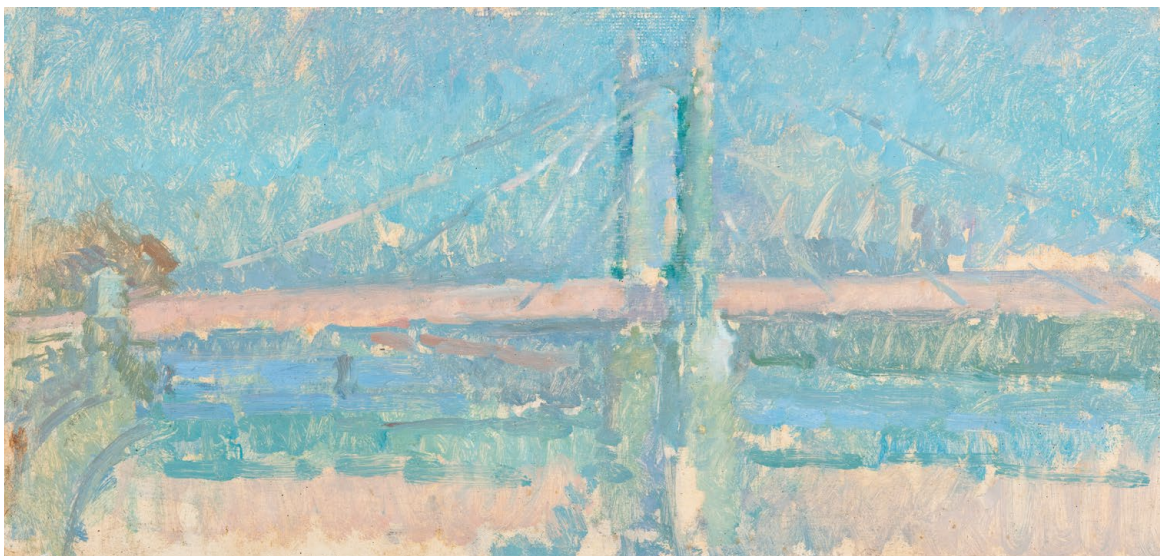
9. Salisbury Cathedral amongst the Trees | oil on panel | 25.5 × 34 cm | 10¹/₈ × 13³/₈ in



10. Still Life with Quince and Skull | oil on canvas | 66 × 76.2 cm | 26 × 30 in



11. Annabels in a Jug | oil on canvas | 66 × 50.8 cm | 26 × 20 in

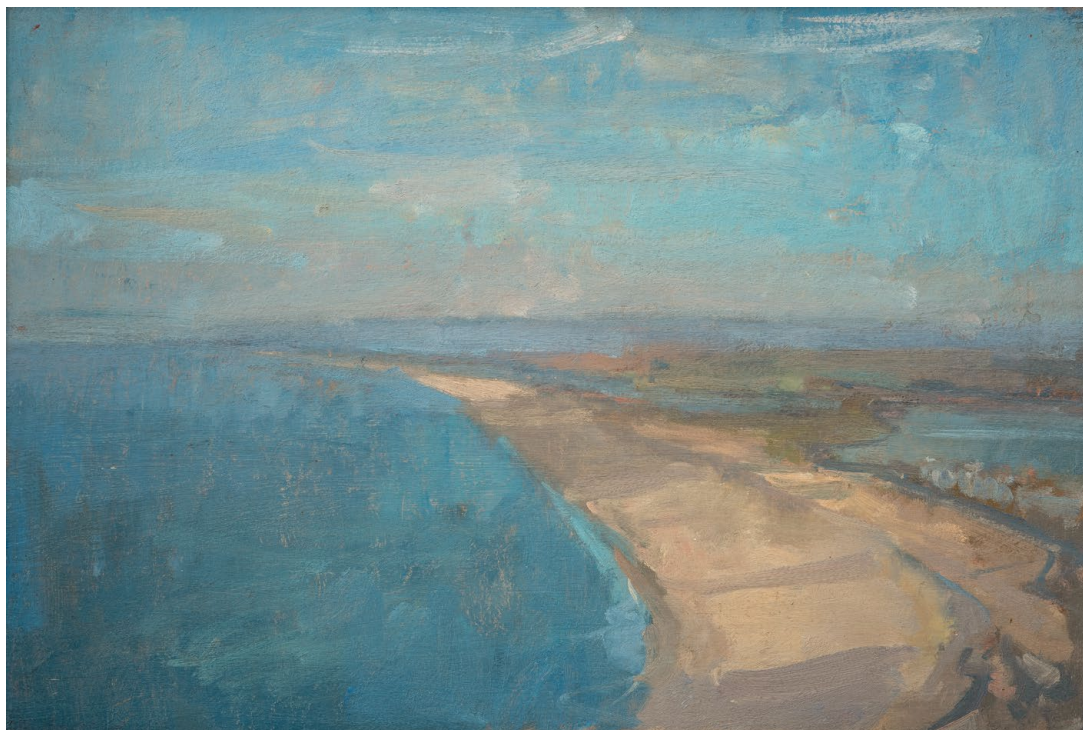


12. **Battersea Bridge** | oil on panel | 18.2 × 37.5 cm | 7 $\frac{1}{8}$ × 14 $\frac{3}{4}$ in



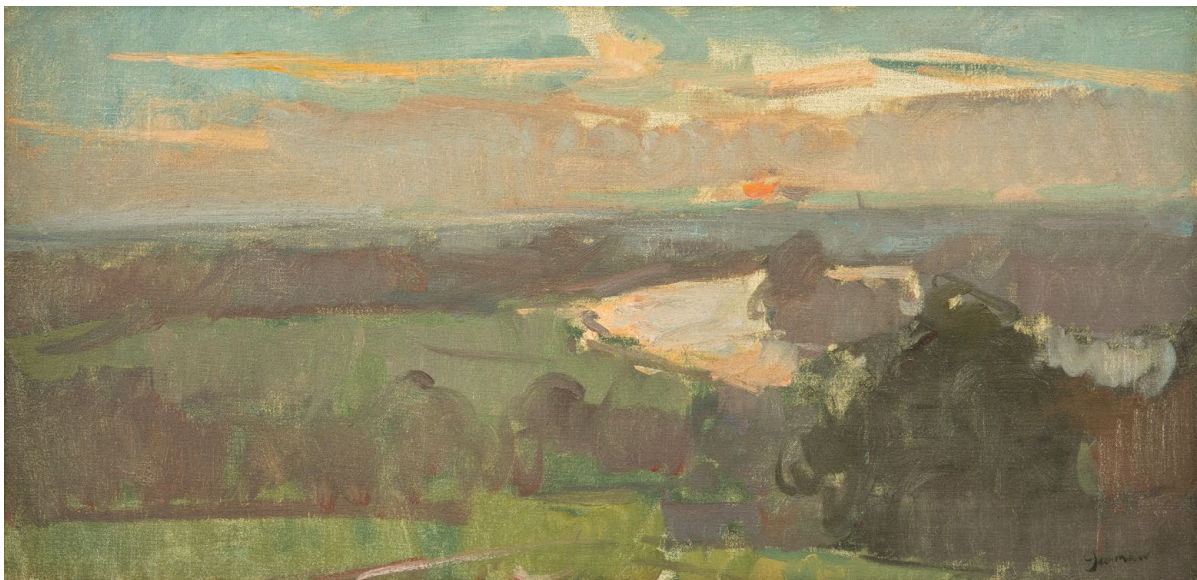
13. Studland with Moon | oil on panel | 13 × 20.3 cm | 5¼ × 8 in





14. Looking North from Orkney | oil on panel | 13.3×20.3 cm | $5\frac{1}{4} \times 8$ in

15. Chesil Beach from Portland Dorset | oil on panel | 29.5×43.2 cm | $11\frac{5}{8} \times 17\frac{1}{8}$ in



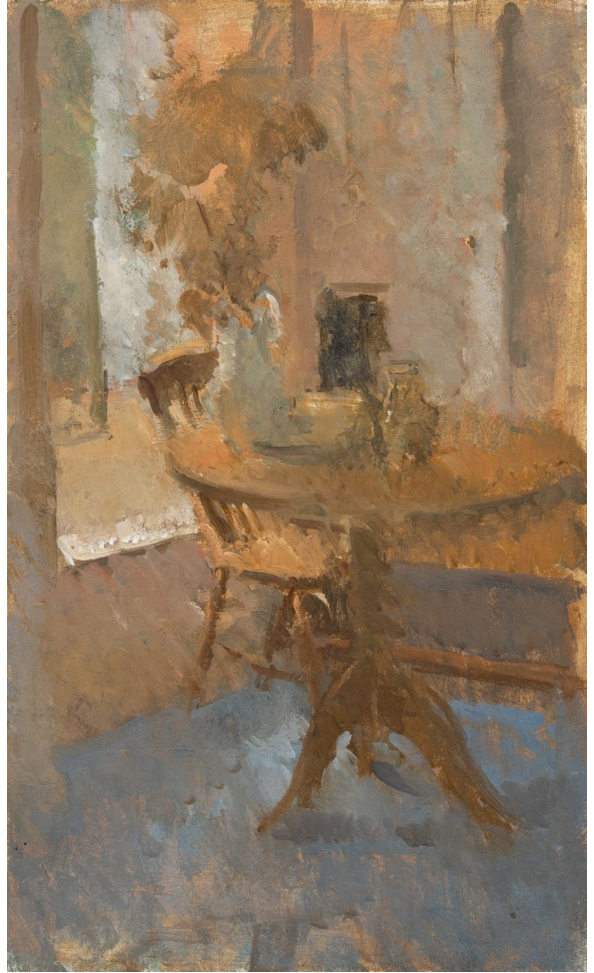
16. View over the River Thames from Richmond Hill | oil on canvas | 30.5 × 61 cm | 12 × 24 in



17. Wylde Valley, Wiltshire | oil on canvas | 45.7 × 61 cm | 18 × 24 in



18. **Monty** | oil on canvas | 30.5 × 35.6 cm | 12 × 14 in



19. Interior, Holland Park | oil on panel | 45 × 27.4 cm | 17¾ × 10¾ in



20. **Studland, Dusk** | oil on canvas | 30.5 × 45.5 cm | 12 $\frac{1}{8}$ × 17 $\frac{7}{8}$ in

21. **Landscape in Dartmoor** | oil on canvas | 55.9 × 66 cm | 22 $\frac{1}{8}$ × 26 in





22. **Two Garlic on a French Plate** | oil on panel | 23.5 × 31 cm | 9¼ × 12¼ in

23. **Roses** | oil on canvas | 30.5 × 30.5 cm | 12⅛ × 12⅛ in

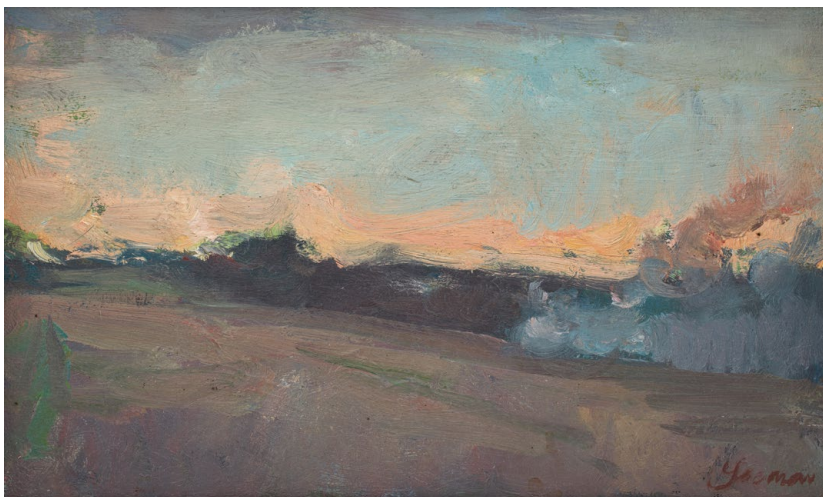




24. **Win Green, Dorset** | oil on panel | 19.7 × 35.5 cm | 7¾ × 14 in



25. Studland, Dorset | oil on canvas | 45.7 × 61 cm | 18 × 24 in



26. **Burning Stubble, Wiltshire** | oil on panel | 12.1 × 21 cm | 4¾ × 8¼ in



27. Wiltshire Landscape | oil on canvas | 13.5 × 30 cm | 5¼ × 11¾ in



28. **Studio Still Life** | oil on canvas | 50.8 × 61 cm | 20 × 24 in

I first met Martin Yeoman in the 1980s when I had an upstairs gallery in Jermyn Street. At the time I was searching for artists to include in my annual Christmas group show. I had admired his work at the New English exhibitions, who in previous days had showed artists I had respected such as Sickert, Gilman, Gore and, more recently, Peter Greenham, Martin's mentor.

As I got to know Martin, I soon realised he was a truly dedicated artist, uncompromising and devoted to his craft. He's an exceptional draftsman and, as proof, I am the proud owner of three of his drawings, all executed with exceptional skill! As a painter, he is a master of light and atmosphere – as is demonstrated by the paintings in this exhibition. He manages to capture a mood whatever the location or subject. I particularly admire his views of Studland, an area I love.

In a world where abstract and conceptual contemporary art seems to dominate, it is refreshing to see a figurative artist at the top of his game.

Henry Wyndham

Martin Yeoman began his artistic career working in-house for Selfridges department store before studying at the Royal Academy Schools, London, from 1975 to 1979 under Peter Greenham. There, he was awarded scholarships that allowed further study in Spain and, on returning to the UK, found commissions from the National Trust and the Royal Family. He has since accompanied HRH The Prince of Wales on a number of official tours, first to the Gulf States in 1986 and later to Hong Kong, India and Nepal.

Yeoman has worked and exhibited extensively overseas, including in Venice, East Asia, North Africa and the Middle East, with his friend, the writer Tim Mackintosh-Smith. He has had numerous solo exhibitions in the UK and is a regular exhibitor at the Royal Academy Summer Exhibition. Recent public exhibitions include 'The Last of The Tide, Portraits of D-Day Veterans' (2015), the Queen's Gallery, Buckingham Palace, commissioned by HRH The Prince of Wales, 'Drawing a Line Under Torture' (2019), Marshall Street, London, in aid of the charity Freedom from Torture, and 'Ed Sheeran: Made in Suffolk' (2019-20), Christchurch Mansion, Ipswich.



AWARDS

1976 - Silver Medal for Drawing, Royal Academy Schools
1978 - David Murray Landscape Scholarship
1979 - Richard Ford Scholarship
1980 - Elizabeth Greenshield Scholarship
1996 - Menena Joy Schwabe Prize
1998 - The Philip Solomon Drawing Prize
2002 - The Ondaatje Prize for Portraiture
2004 - The Bill Turner Prize for Drawing
2016 - The Doreen McIntosh Prize
2016 - The Woodhay Picture Gallery Prize for Drawing

NOTABLE COLLECTIONS

HM The Queen
HRH The Prince of Wales
HRH The Princess Royal
Sir Brinsley Ford
The British Museum
The British Council
The National Trust
National Portrait Gallery
The Royal Collection
Barings Bank

Grimsby School of Art
J O Hambro
Diocese of Birmingham
Merton College, Oxford
Royal Holloway, University of London
Ruth Borchard Collection
Pembroke College, Cambridge
Hoare's Bank
St Lawrence College
MBI Al Jaber Foundation



front cover:

1. Lulworth Cove, Dorset

oil on canvas | 40.6×50.8 cm | 16×20 in

Catalogue design by Graham Rees Design

Artwork photography by Peter Stone

Images of Martin's new studio in Wiltshire by Greg Shingler

Photograph of His Royal Highness The Prince of Wales by Hugo Burnand

With special thanks to George Yeoman

Jenna Burlingham FINE ART

2A George Street, Kingclere
Hampshire RG20 5NQ
www.jennaburlingham.com

